



GUILDFORD
BOROUGH

www.guildford.gov.uk

Tom Horwood
Joint Chief Executive of Guildford and
Waverley Borough Councils

Dear Councillor

PLANNING COMMITTEE - WEDNESDAY 4 JANUARY 2023

Please find attached the following:

Agenda No Item

8. **Late Sheet - Presentations (Pages 1 - 40)**

Yours sincerely

Sophie Butcher, Democratic Services Officer

Encs

This page is intentionally left blank

22/P/01151

**20 Pit Farm Road
Guildford
GU1 2JL**

[Previous](#)

[Next](#)

[Home](#)



Site Location

[Previous](#)

[Next](#)

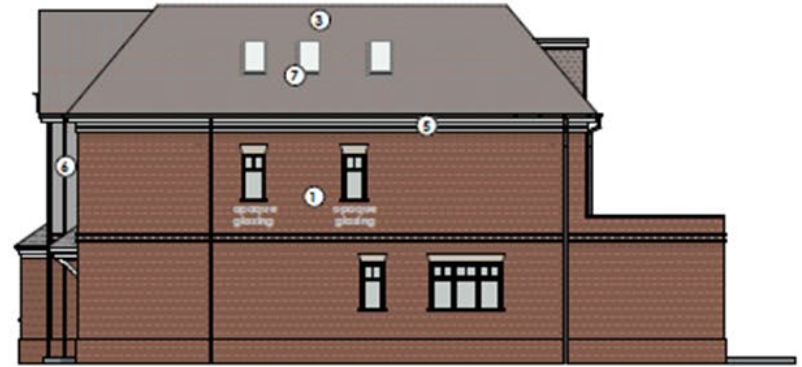
[Home](#)



22



Front elevation



South-east elevation



Rear elevation



North-west elevation

Plots 1 and 2

[Previous](#)

[Next](#)

[Home](#)



Front elevation



South-east elevation



Rear elevation



North-west elevation

Plot 3

[Previous](#)

[Next](#)

[Home](#)



Street-scene

Previous

Next

Home



Rear elevation of the site

[Previous](#)

[Next](#)

[Home](#)



[Previous](#)

[Next](#)

[Home](#)



[Previous](#)

[Next](#)

[Home](#)



[Previous](#)

[Next](#)

[Home](#)



[Previous](#)

[Next](#)

[Home](#)



[Previous](#)

[Next](#)

[Home](#)



[Previous](#)

[Next](#)

[Home](#)



Street-scene

Previous

Next

Home



Street-scene

Previous

Next

Home

This page is intentionally left blank

22/P/00706

**White Timbers
Forest Road
East Horsley
Leatherhead
KT24 5ER**

[Previous](#)

[Next](#)

[Home](#)

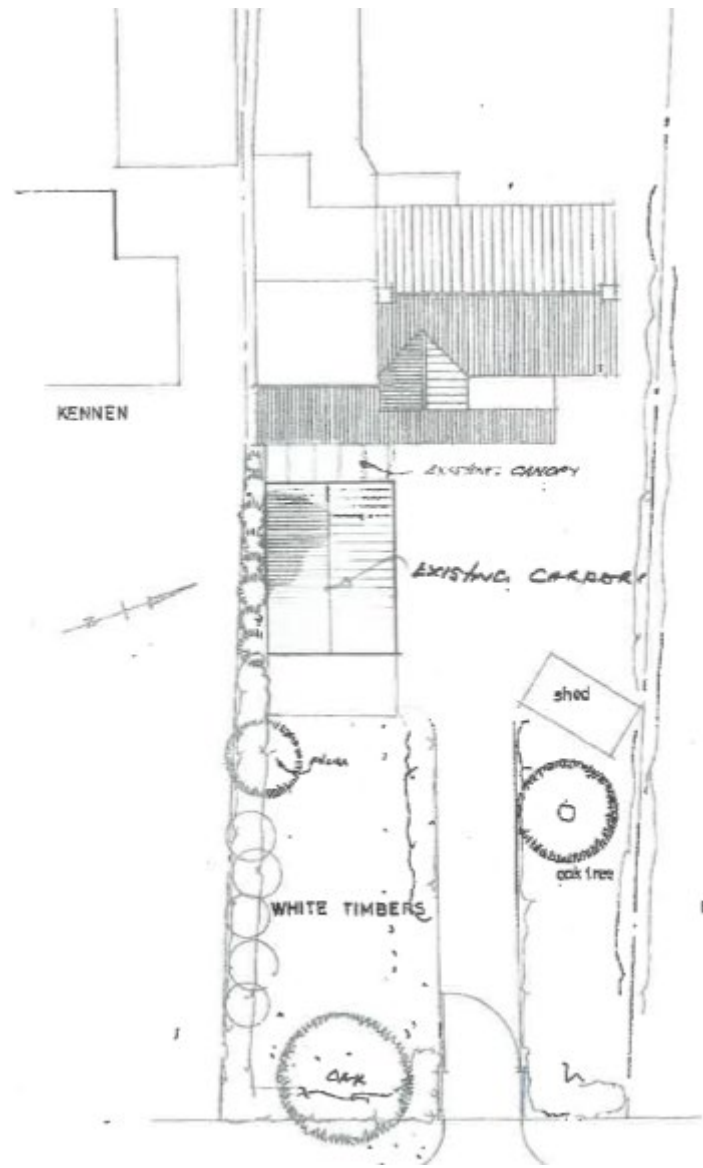


Site Location

[Previous](#)

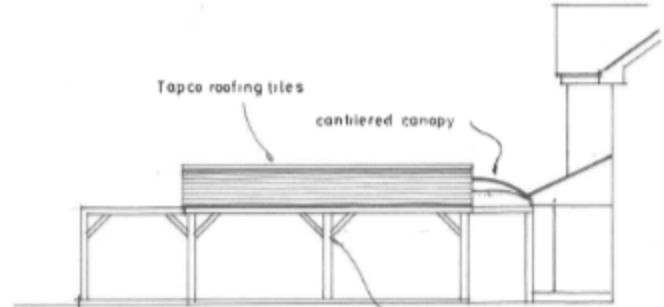
[Next](#)

[Home](#)



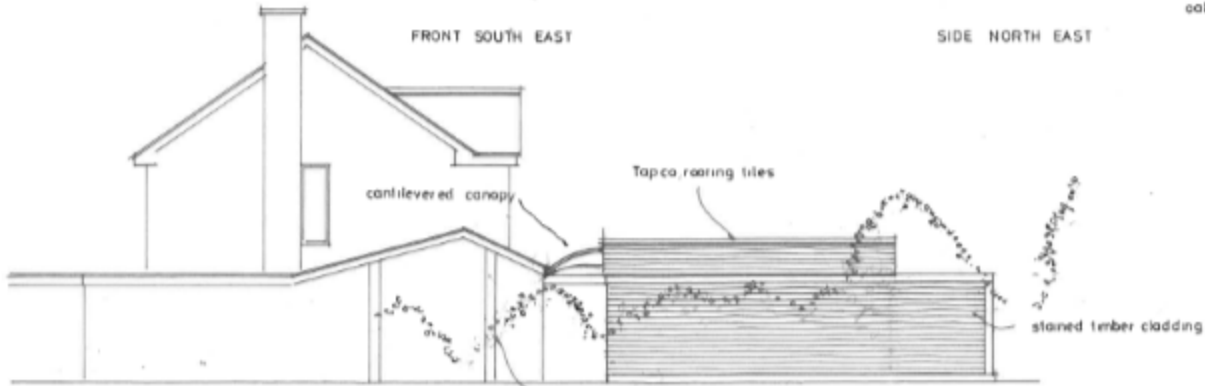


FRONT SOUTH EAST



oak posts and beams

SIDE NORTH EAST



cantilevered canopy

Tapco roofing tiles

stained timber cladding

line of existing shrubs and trees

SIDE SOUTH WEST



Site photo

[Previous](#)

[Next](#)

[Home](#)



Site photo

[Previous](#)

[Next](#)

[Home](#)



Site photo

[Previous](#)

[Next](#)

[Home](#)



Site photo

[Previous](#)

[Next](#)

[Home](#)

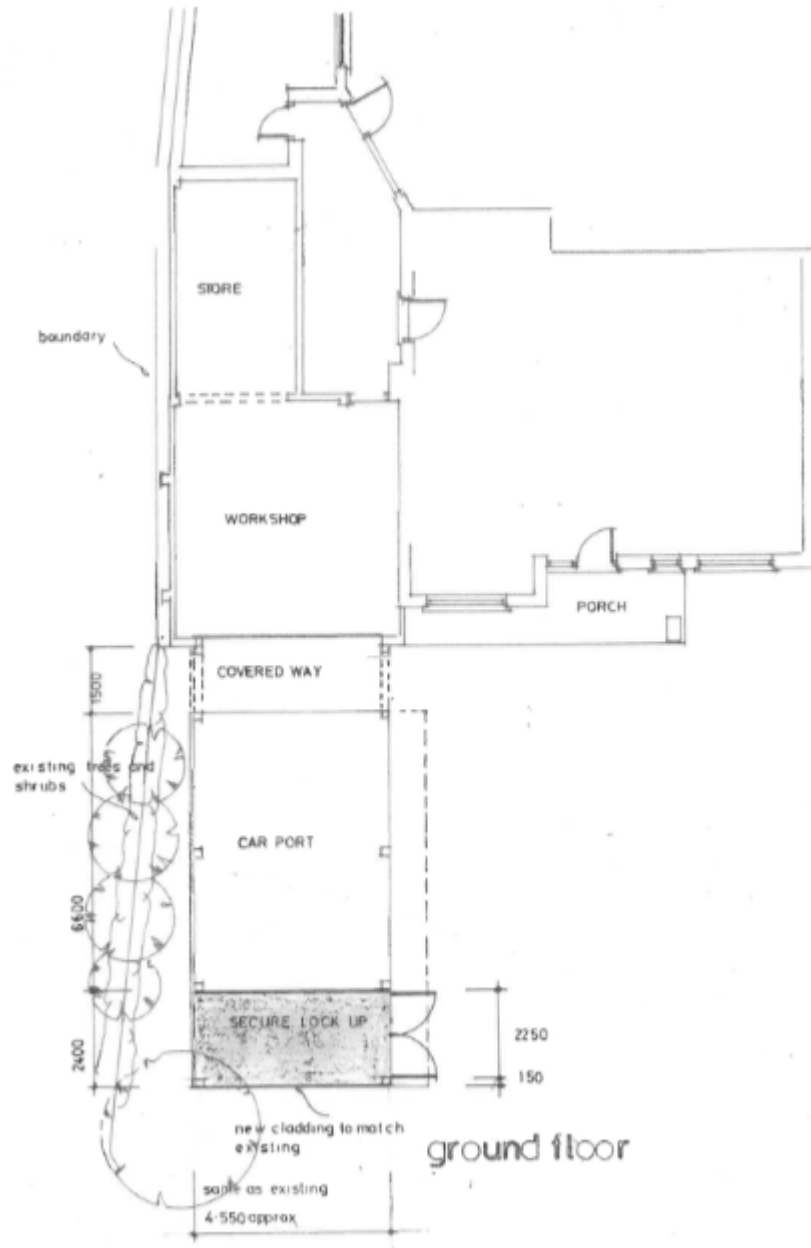


Site photo

[Previous](#)

[Next](#)

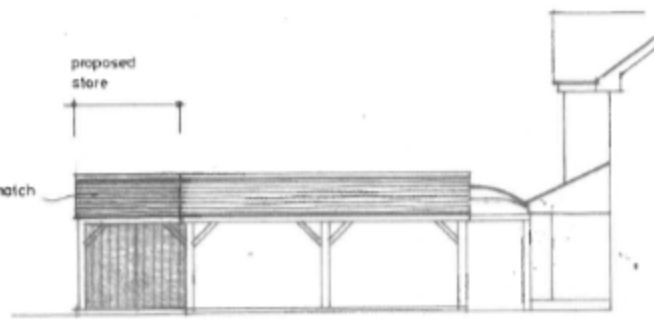
[Home](#)





stained timber cladding to match existing

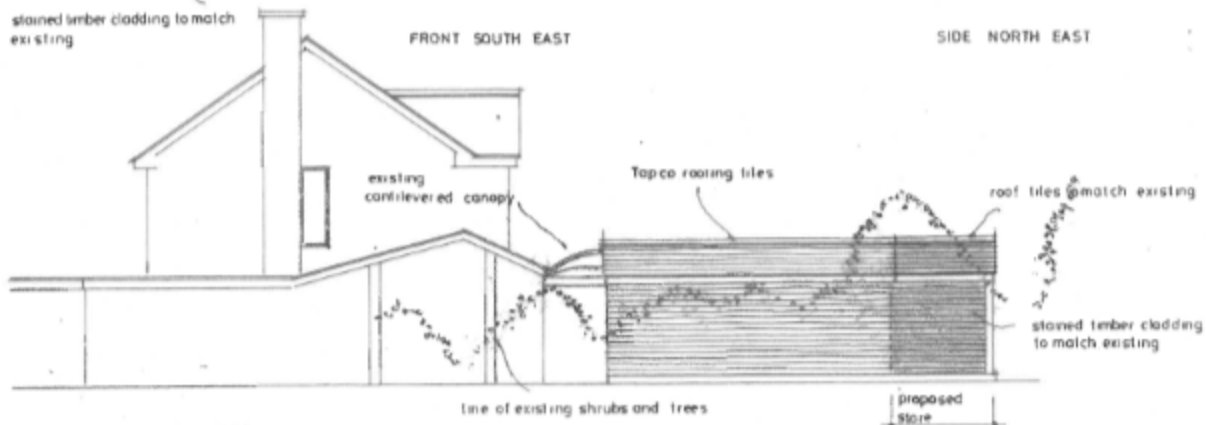
FRONT SOUTH EAST



roof tiles to match existing

proposed store

SIDE NORTH EAST



existing cantilevered canopy

Topco roofing tiles

roof tiles to match existing

stained timber cladding to match existing

line of existing shrubs and trees

proposed store

3.000
same as existing

This page is intentionally left blank

22/P/01330

1 Fowlers Croft

Compton

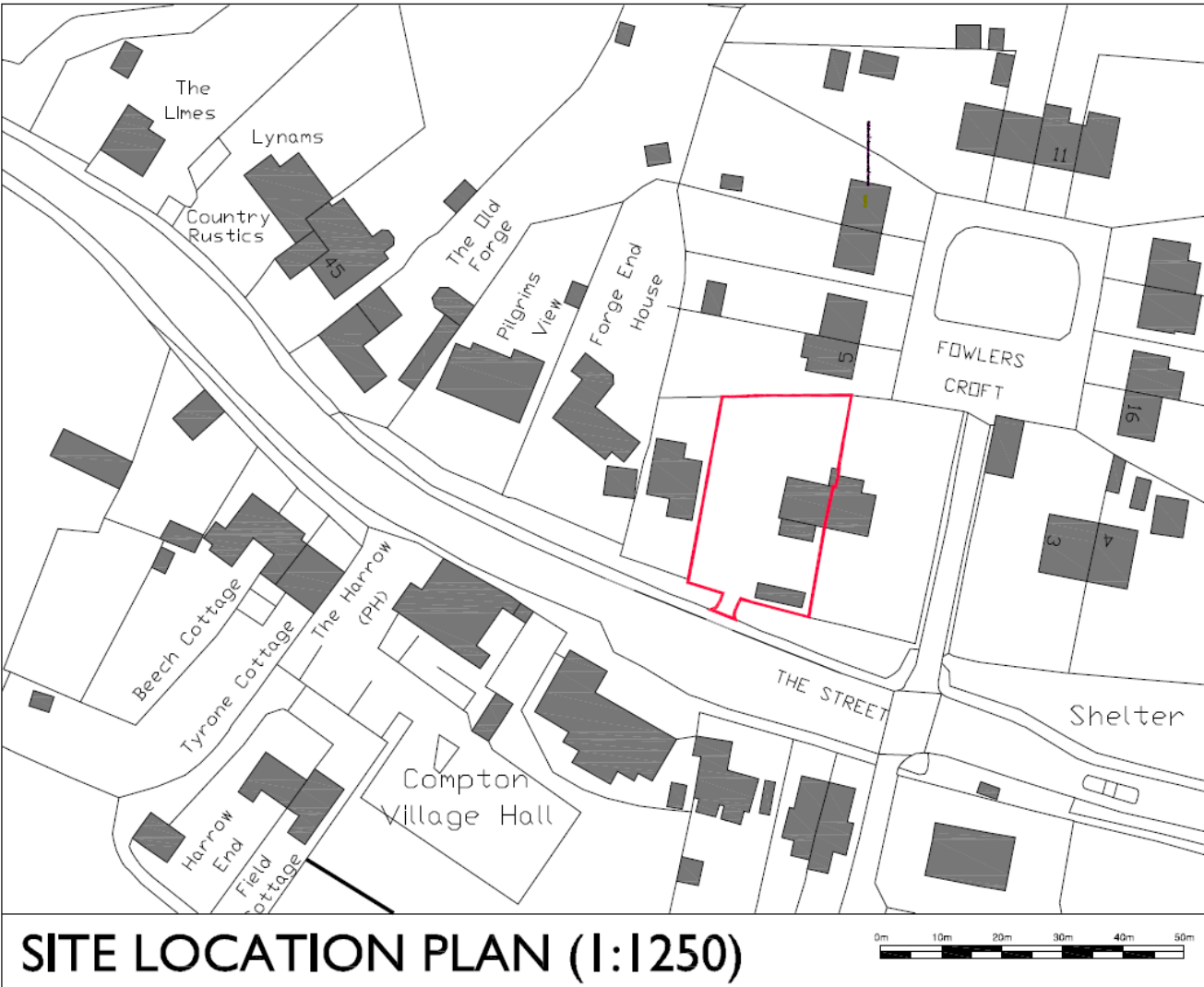
Guildford

GU3 1LA

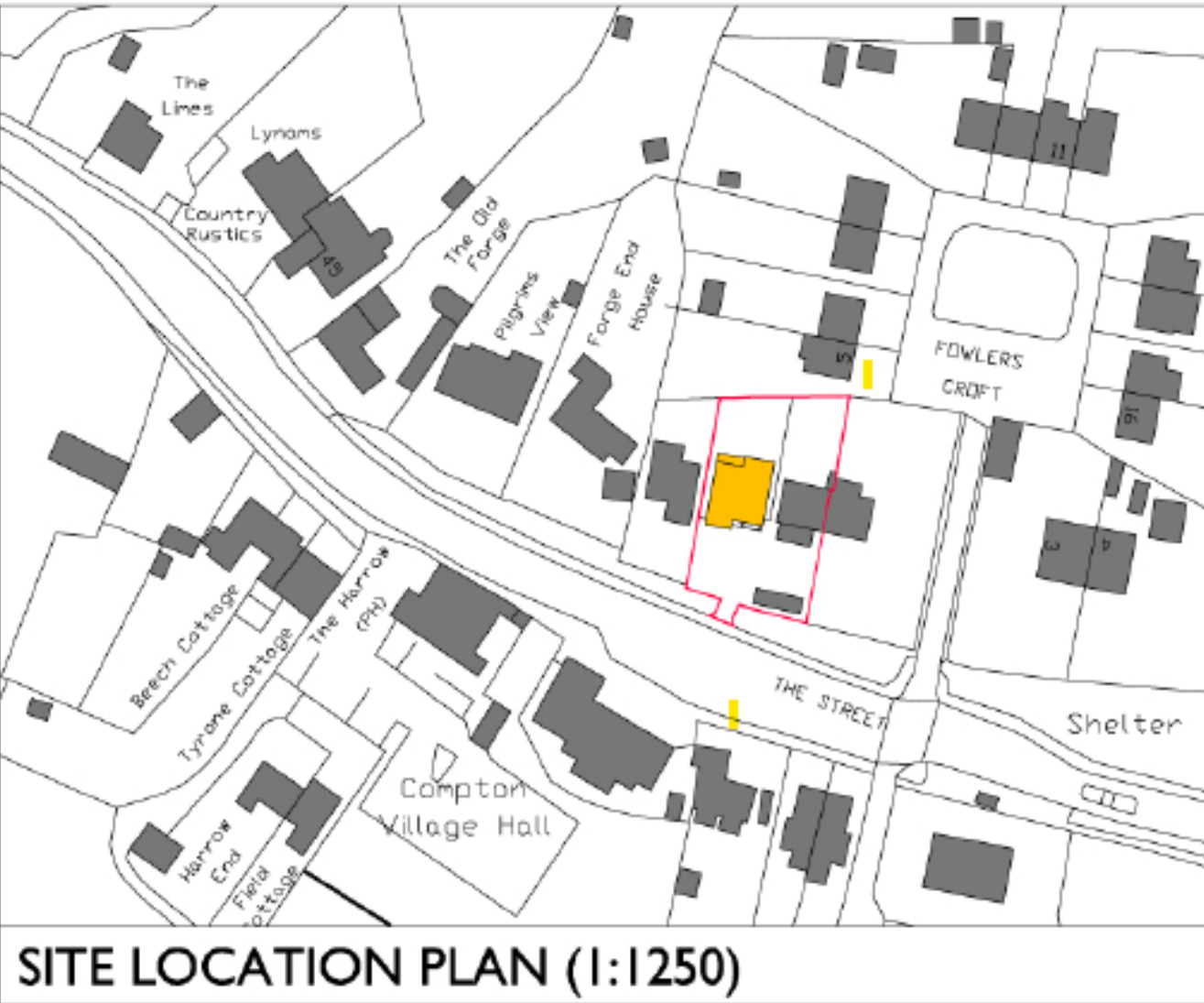
[Previous](#)

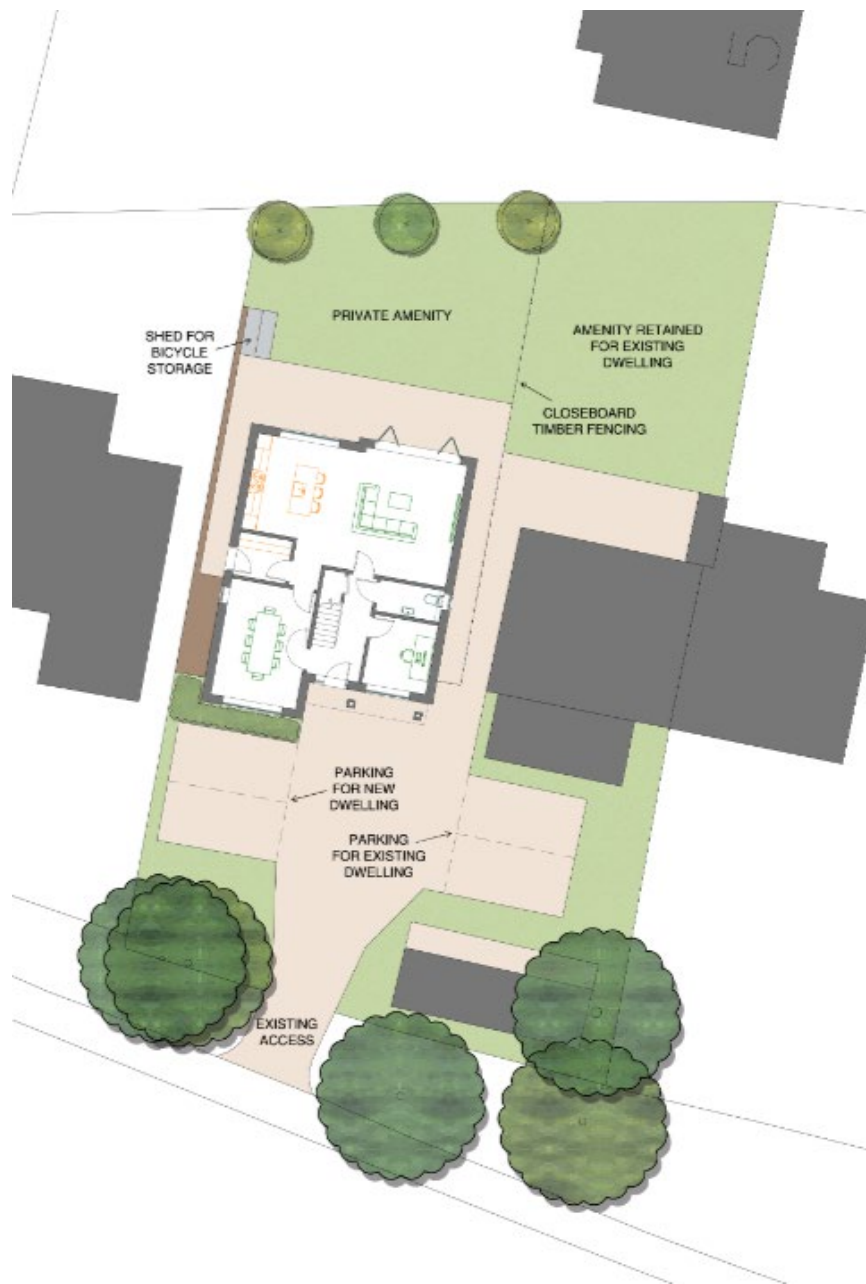
[Next](#)

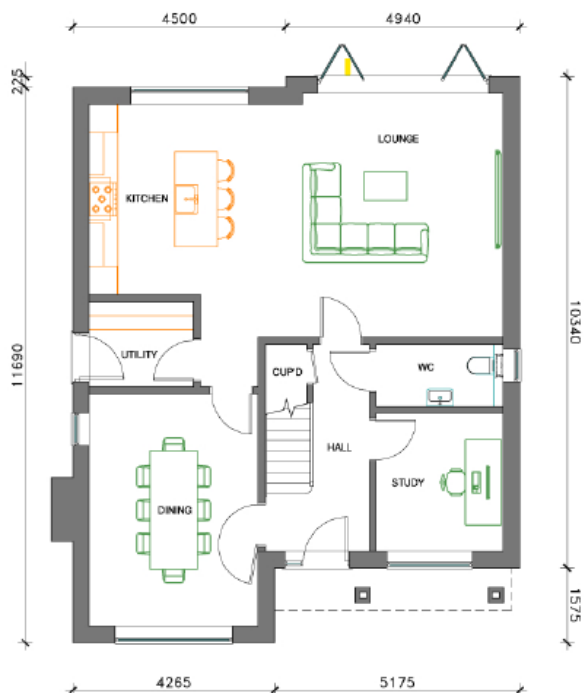
[Home](#)



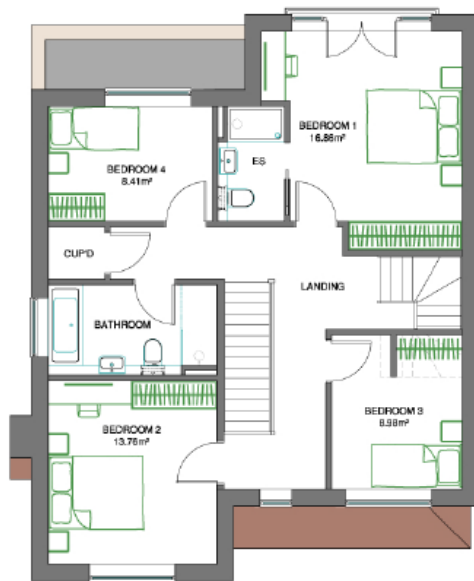
SITE LOCATION PLAN (1:1250)



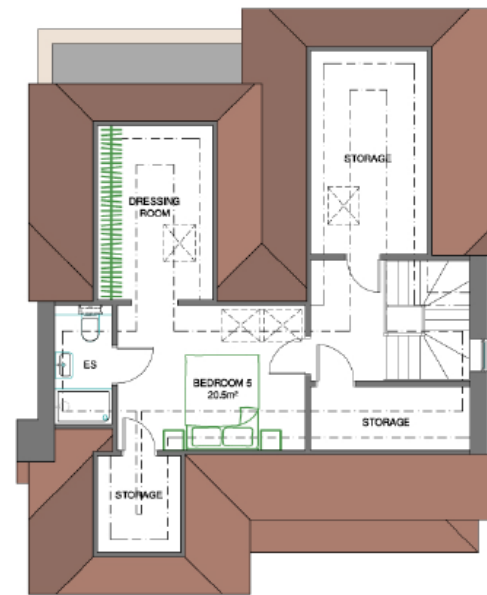




GROUND FLOOR PLAN



FIRST FLOOR PLAN



SECOND FLOOR PLAN

Floor Plan

[Previous](#)

[Next](#)

[Home](#)



SOUTH ELEVATION



NORTH ELEVATION

(roof light cills 1.8m above FFL)



WEST ELEVATION

(first floor window obscurely glazed)



EAST ELEVATION

(second floor window obscurely glazed)





Site Photo

[Previous](#)

[Next](#)

[Home](#)



Site Photo

[Previous](#)

[Next](#)

[Home](#)

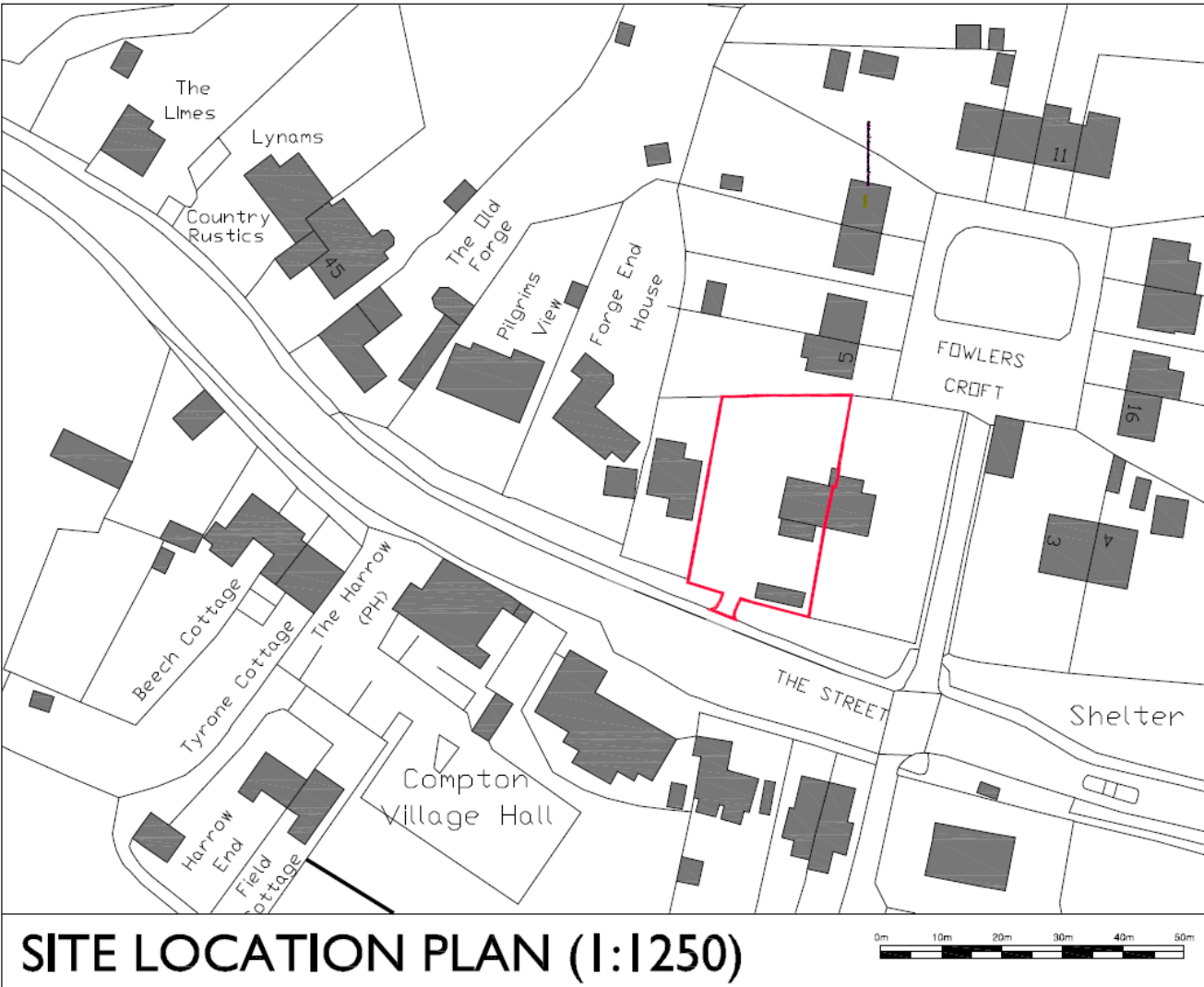


Site Photo

[Previous](#)

[Next](#)

[Home](#)



[Previous](#)

[Next](#)

[Home](#)

[Previous](#)

[Next](#)

[Home](#)